

Super magnetic water
field Activator 'COSMOS'

COSMOS



REVIVED WATER

It transforms into "COSMOS WATER"

OILSERVE

บริษัท ออยเซอร์ฟ จำกัด
OILSERVE CO., LTD.

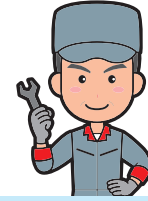
9 ซอยทวีวัฒนา 25 แยก 7 แขวงทวีวัฒนา เขตทวีวัฒนา กรุงเทพฯ ๑๐๑๗๐
9 Soi Thawi Watthana 25 Yeak 7, Thawi Watthana, Thawi Watthana, Bangkok 10170
Tel: (+662) 441 9247 Fax : (+662) 441 9248 TAX ID : 0105553015358
E-mail : sales@oilserve-thai.com, oilserveco@gmail.com, www.oilserve-thai.com

Clean up the supply / drainage system/drainage system which upgrades the building. Maintenance cost is also reduced greatly.

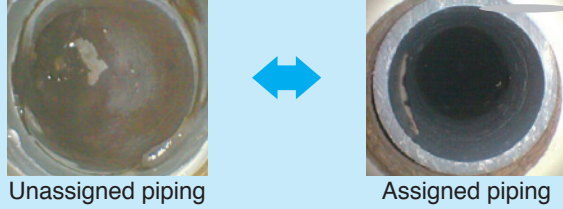
Countermeasure against rust and dirt in water supply pipes.

Cosmos removes rust and dirt in existing pipe. It also prevent dirt from sticking on the pipes.

Effect of installation on water supply / drain pipe



Effect on new piping (15 months after installation)



Effect on the installed piping (6 months after installation)



Countermeasure against smudge and bad odor in drainage pipe.

Negative "COSMOS WATER" helps. COSMOS also reduces urine stone adhesion in drain pipes. It reduces accumulation of dirt and residue by suppressing magnetic bacteria.

Effect on drain pipe (after 6 months installation)



Effect on grease trap (6 months after installation)



The Characteristic of Cosmos

Patented product / Patent No. 3992583
Water Works Association certification number Z-358

- ◆ Maintenance free
- ◆ Semi-permanent available
- ◆ Contribute to the conservation of the global environment

Product size can be customized.

By using the strongest neodymium magnet (permanent magnet), by narrowing the distance between the magnets to the limit, we generate a large electromotive force in water, making it water with negative charge and excellent deoxidation power.

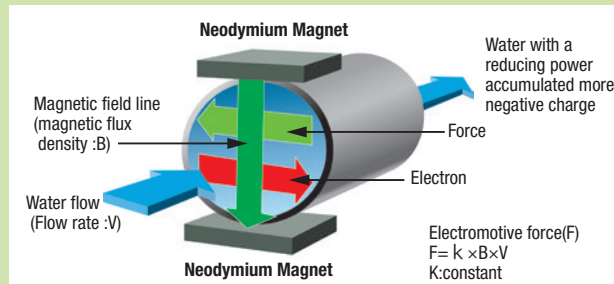
While maintaining the piping which prevents and removes red water and red rust, soft and delicious cosmos water can be secured.

- Easy installation
- Installation time is short
- There is no need for discontinuation of water supply even there is a receiving tank or an elevated tank.
- Relocation to other facilities is possible.

※Follow installation procedures and capacity of each supply tool when installing COSMOS on a water supply.

The difference in the effectiveness of the device varies on individual constitution, usage situation and environmental conditions.

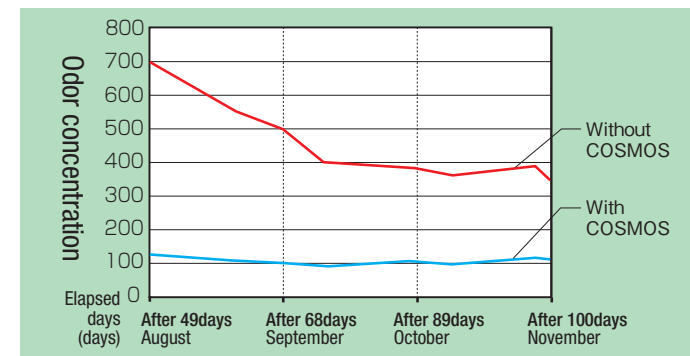
Principales of "Cosmos"



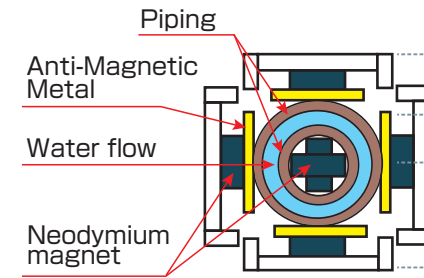
Fleming's rule

Magnetic force lines covers the space on the earth. When water crossed these magnetic force lines, electrons are generated and transforms into a "powerful water." COSMOS, as water field activator, is developed to deoxidation this phenomenon which occurs in the earth space itself. The device COSMOS gives electrons to minerals inside the water causing the water to have negative electric charge when it pass through the device giving the water a lot more electromotive force than hydro power.

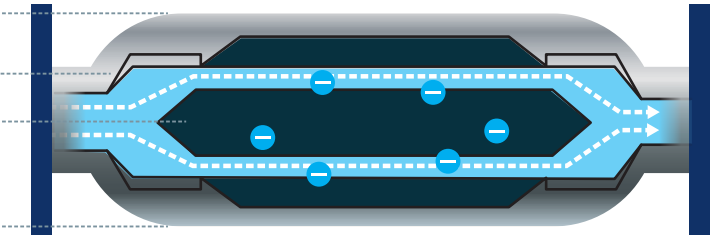
Effect on odor



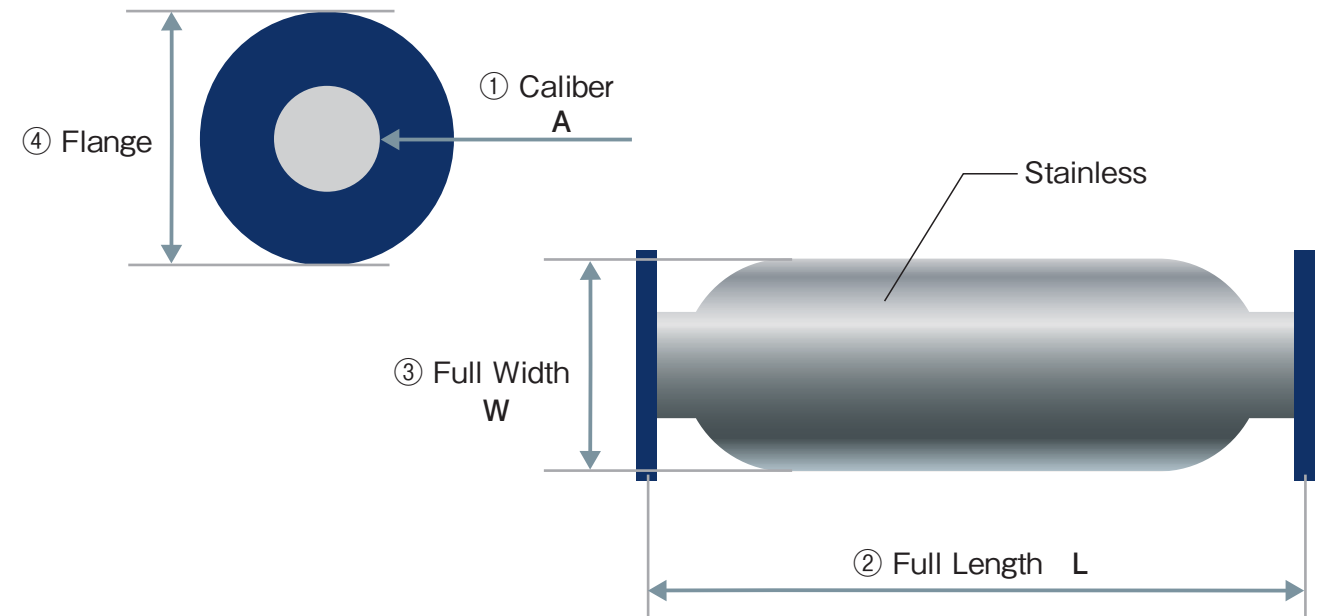
Structure of 「COSMOS」



Highly efficient double structure



In order to increase efficiency rate, one can use the principle stated above [20A] or have a double structure.



① Caliber A	② Full Length L	③ Full Width W	④ Flange	Weight	Flow rate
20mmφ	470mm	101.6mmφ	※Bulb socket	5.3kg	2.26m ³ /h
25mmφ	496mm	114.3mmφ	※Union	5.7kg	3.50m ³ /h
30mmφ	570mm	114.3mmφ	135mmφ	9.2kg	5.10m ³ /h
40mmφ	658mm	114.3mmφ	140mmφ	10.5kg	9.00m ³ /h
50mmφ	752mm	139.8mmφ	155mmφ	16.5kg	14.00m ³ /h
65mmφ	910mm	139.8mmφ	175mmφ	21.5kg	24.00m ³ /h
75mmφ	1015mm	165.2mmφ	185mmφ	30.5kg	32.00m ³ /h

※Flow rate shows 2m / Second from standard water supply.